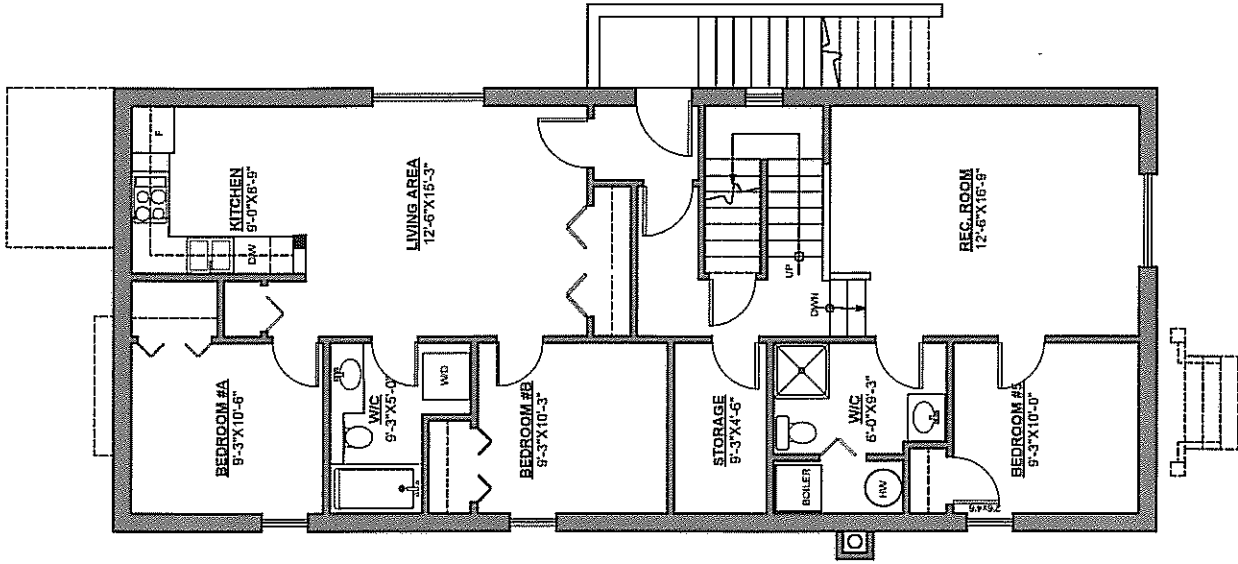


VIOLET STREET HOME, NORTH VANCOUVER



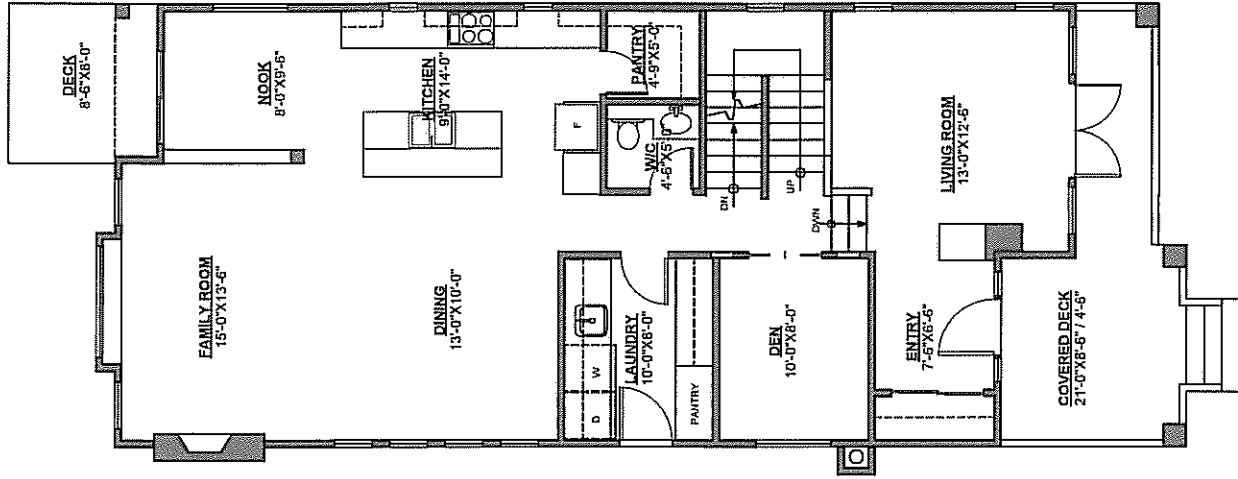
FRONT ELEVATION

VIOLET STREET HOME,
NORTH VANCOUVER



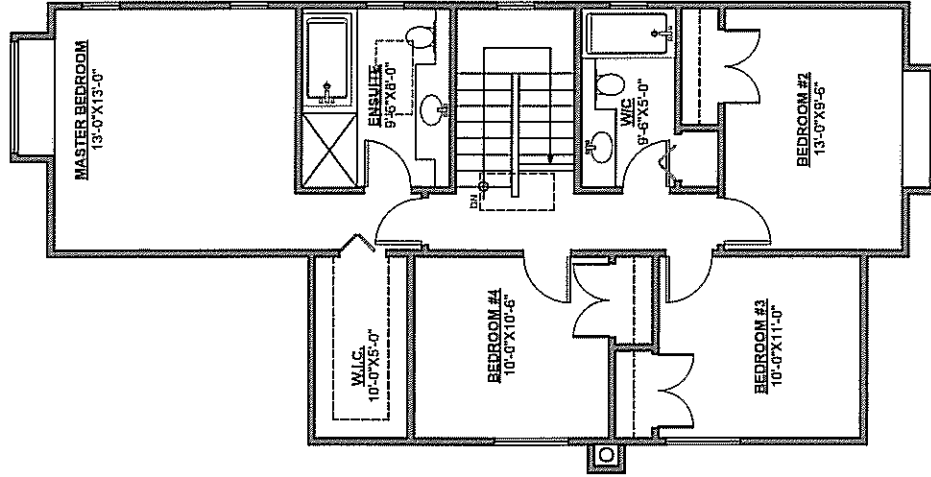
1356 SF

VIOLET STREET HOME,
NORTH VANCOUVER



1195 SF

VIOLET STREET HOME,
NORTH VANCOUVER



944 SF

BASEMENT FLOOR PLAN

MAIN FLOOR PLAN

UPPER FLOOR PLAN

These are not "as built" plans, but represent a dwelling similar to that which was built.
All room sizes are approximate.